

Digital Compression Load Cell – Type DH



Special Features

- ATEX certified (Zone 1, 2, 21, 22)
- Robust capacitive technology
- High tolerance of up to 400% overload
- Stainless steel
- Hermetically sealed to IP68
- Laser welded
- Withstands welding voltages and ESD
- Cable length up to 100meters
- Load cell cable replaceable
- Pre-calibrated with signal in kg or kN
- Calibration independent of cable length
- Easy mechanical and electrical installation
- Can be used in both ATEX and non-ATEX installations



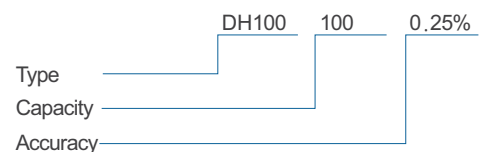
Applications

- Silo weighing
- Level measurement
- Process weighing
- Offshore applications
- Heavy duty applications

Options

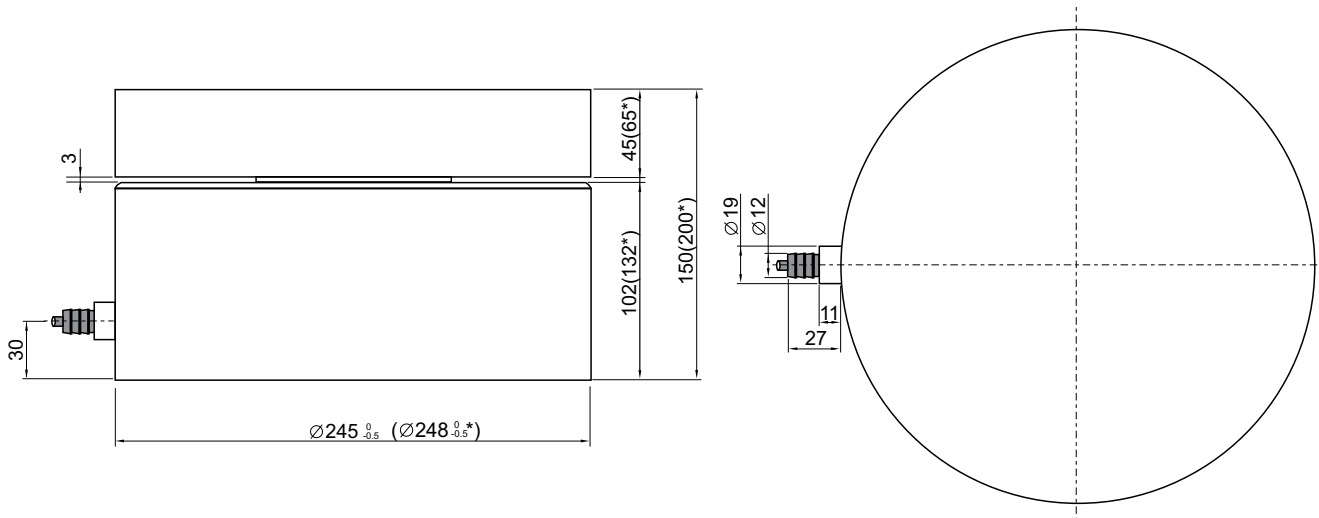
- ATEX (Zone 1, 2, 21, 22) version type DHA
- ATEX II 2G Ex ia IIC T6 / ATEX II 2D Ex iaD 21 T85°C
- Load cell cable length 10, 20, 50 or 100meters

Order information



Digital Compression Load Cell – Type DH

Dimensions (mm)



* 200 to 500 ton version

Parameter	Unit	0.25%
Rated capacity (E _{max})	ton	100, 200, 300, 400, 500
Safe overload limit	% of E _{max}	400
Safe sideload limit	% of E _{max}	500
Minimum dead load	% of E _{max}	0
Accuracy	% of E _{max}	0.250
Repeatability	% of E _{max}	0.060
Hysteresis	% of E _{max}	0.080
Creep 30min.	% of E _{max}	0.060
Temperature effect on zero	% /10 °C	0.080
Temperature effect on sensitivity	% /10 °C	0.080
Compensated temperature range	°C	-10 to 50
Operating temperature range	°C	-50 to 70 (100*)
Deflection at E _{max}	mm	Max 0.10
Measuring rate	Hz	Up to 1.000
Supply	Vdc	24Vdc ±10%
Internal resolution	Bit	24
Material		Stainless Steel 17-4 PH and AISI 316
Protection		IP68
Cable		6meter standard coaxial RG-58 (Ø6mm) with BNC connector
Maximum cable length	m	100
Weight	kg	65 / 75
Output options		Profibus DP, DeviceNet, Modbus ASCII/RTU, EtherCAT EtherNet/IP, RS485, 4-20mA, 0-10Vdc

* with Teflon cable